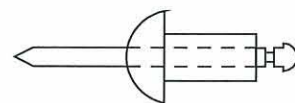


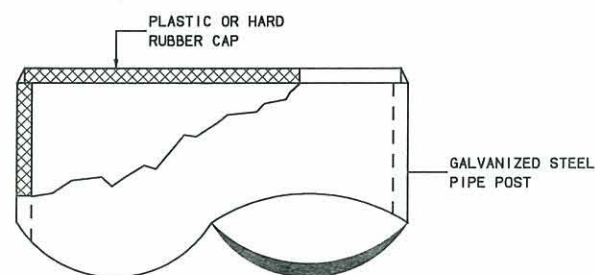
1/4" FASTENER AND 1/4" COLLAR (TYPICAL)

GRIP NO.	GRIP LENGTH	F-MIN.
2	0.094 - 0.156	1-7/16"
3	0.157 - 0.218	1-1/2"
4	0.219 - 0.281	1-9/16"
5	0.282 - 0.343	1-5/8"
6	0.344 - 0.406	1-11/16"
17	0.407 - 1.093	2-3/8"



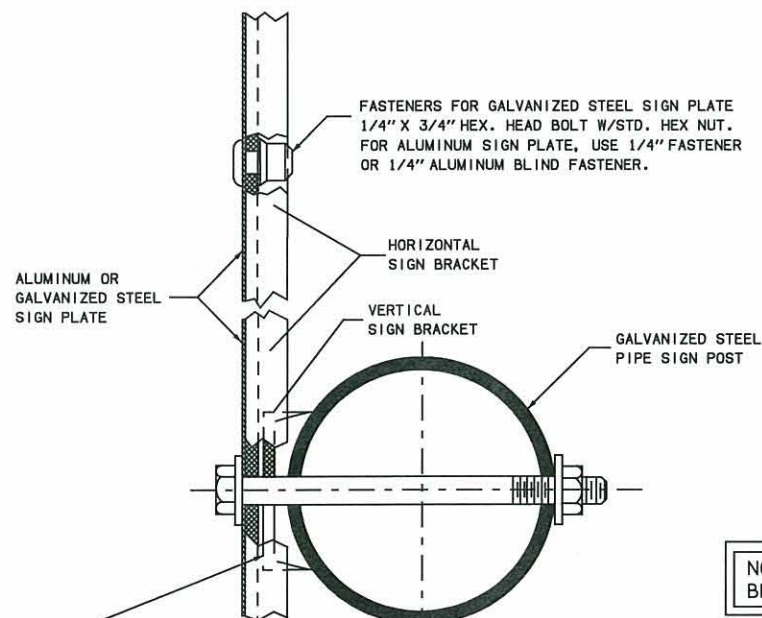
ALUMINUM ALLOY BODY AND MANDREL. GRIP RANGE 1/16" TO 1/4"

1/4" BLIND FASTENERS



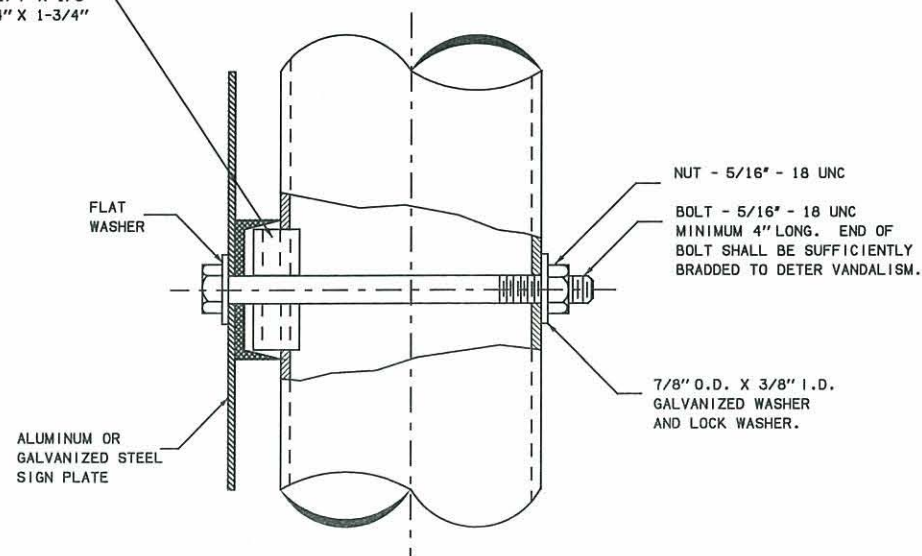
POST CAP NOT REQUIRED FOR 1-1/2" AND 2" PIPE POSTS

WHEN CONSTANT THICKNESS EXTRUDED ALUMINUM SIGN BRACKETS ARE USED THE HORIZONTAL SIGN BRACKET MAY CONTACT THE SIGN POST PREVENTING A SNUG AND PROPER FIT. WHEN THIS OCCURS AN ALUMINUM SPACER EITHER 1-1/4" X 1-1/4" X 1/8" THICK FOR 1-1/2" BRACKETS, OR 1-3/4" X 1-3/4" X 1/8" THICK FOR 2" BRACKETS SHALL BE USED.

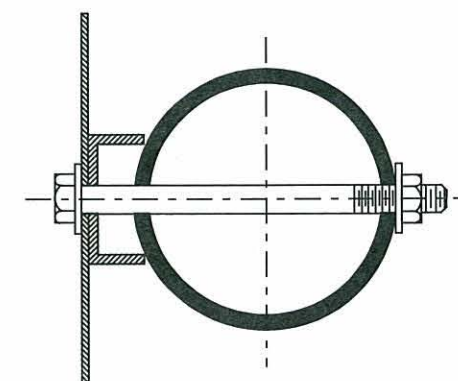


TOP VIEW

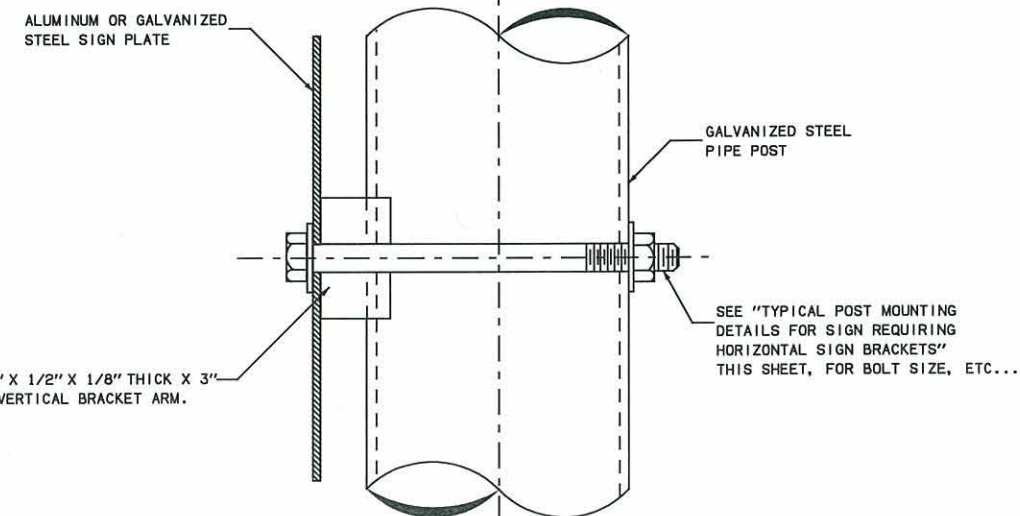
NOTE: ALL NUTS SHALL BE SELF-LOCKING.



SIDE VIEW
TYPICAL POST MOUNTING DETAILS FOR SIGN REQUIRING HORIZONTAL SIGN BRACKETS



TOP VIEW



SIDE VIEW
TYPICAL POST MOUNTING DETAILS FOR SIGN REQUIRING VERTICAL SIGN BRACKETS ONLY



APPROVED BY TRAFFIC ENGINEER: *Charles Smith* DATE: 8/19/10

TRAFFIC STANDARD

SHEET SIGN ASSEMBLY DETAIL (GALVANIZED PIPE)